

2009
MONTGOMERY COUNTY
COMMUNITY
HEALTH
ASSESSMENT



Montgomery County Health Department
400 Salisbury

Montgomery City, Missouri

573-564-2495

Fax 573-564-5059

www.montgomerycountyhealth.org



Public Health
Prevent. Promote. Protect.

Purpose and Process

A community assessment is conducted to provide a summation of a community at a particular place and time. An assessment will identify a community's strengths, weaknesses and priority areas to allow for the planning of future health care needs of its citizens. This assessment represents a snapshot of Montgomery County. In order to assess the strengths and weakness, Montgomery County data and statistics are compared to those of the state of Missouri. This assessment represents a collaborative effort between stakeholders, citizens, healthcare providers, service providers and others interested in the health and well-being of Montgomery County.

Many reputable data sources were reviewed and assessed in order to obtain the most accurate and complete information. These resources are referenced throughout this document and are included in a list of resources located in elsewhere in this assessment. Additionally, a community assessment survey was conducted in early 2009 in order to determine the community's perception of its priority needs. Identified areas of concern will be reviewed in order to assess resources presently available in the county and to assist in planning and addressing these concerns in the future. Statistical data on current health issues and trends were reviewed to track changes in areas such as population, health care concerns and status indicators.

Summary of Findings

A review of Montgomery County community health status indicators, including primary and secondary data reveals the following areas of concern:

Issues were identified relating to tobacco use, physical inactivity, obesity, drug use, alcohol use, and child neglect/abuse.

The three most significant problems affecting the health status of the Montgomery County population within the jurisdiction of the local public health agency are:

1. Substance Use/Abuse (drug, alcohol and tobacco)
2. Nutrition, Obesity and Physical Inactivity
3. Child Abuse/Neglect

Collaboration with all community partners is essential in meeting the health needs of our county. MCCHIP (Montgomery County Health Improvement Project) was established in 1996 and meet regularly to discuss and assist in the development of strategies to address some of our health concerns. We will review the 2009 assessment findings at our next scheduled meeting in June 2009 and identify one public health priority to address.

COMPLETED MARCH 2009

Montgomery County Community Health Assessment 2009

Demographics:

Montgomery County has seen a slight decrease in its population from 2000 to 2007. A 2007 estimate put Montgomery County's population at 11,920 a decrease of 216 from the 2000 estimate. This change reflects a -1.8% compared to 5.0% for the state of Missouri.

Population Estimate for the State of Missouri		
	Year	
	2000	2007
County/City	Number	Number
Montgomery County	12,136	11,920
Total for Selection	12,136	11,920
Missouri	5,596,692	5,878,415

Source: DHSS MICA

Montgomery County's population remains predominantly White. The ethnic composition of Montgomery County's population in 2007 was: Caucasians 11,330, while the estimated Black population was 279, Asians 121, Hispanics 114, and American Indians 33(OSEDA). There is little to no immigration or refugee population. We have a small population of Mennonites in the northwest corner of the county. Immunizations and prenatal care are at risk in this community. County schools have no non-English speaking students.

2007 Population by Race and Ethnicity	Montgomery County	Missouri
White persons		95.1% 85.1%
Black persons		2.3% 11.5%
American Indian and Alaska Native persons,		0.3% 0.5%
Asian persons		1.0% 1.5%
Native Hawaiian and Other Pacific Islander)		Z 0.1%
Persons reporting two or more races		1.3% 1.4%
Persons of Hispanic or Latino origin		1.0% 3.0%
White persons not Hispanic, percent		94.2% 82.3%

Source: mcdc2.missouri.edu

An estimated 17.5% of Montgomery County residents in 2007 were 65 years of age or older as compared to the statewide percent of 13.4. This calculated estimation of those 65 years of age and older remains fairly constant. An age analysis shows in 2007, 23.5% of our population to be under the age of 18 as compared to 24.2% for the state of Missouri.

Population Estimates by Age in 2007 For Montgomery County	Number	Rank in State	Pct Dist. in County	Pct Dist. in State
Preschool (0 to 4)	804	76	6.7%	6.7%
School Age (5 to 17)	1,998	81	16.8%	16.8%
College Age (18 to 24)	933	85	7.8%	7.8%
Young Adult (25 to 44)	2,871	82	24.1%	24.1%
Older Adult(45 to 64)	3,232	80	27.1%	27.1%
Older (65 plus)	2,082	78	17.5%	17.5%
Median Age	40.9	33		Median Age = 40.9

Sources: US Census Bureau

The 2007 Census Bureau's estimates, there were 6,205 housing units in Montgomery County. The ownership rate was 78.7% compared to 70.3% for the state. In 2000, the median value of owner-occupied housing units was \$53,900 compared with the statewide figure of \$89,000.

Housing Data	Montgomery County	Missouri
Total Housing Units, 2007	6,205	2,647,274
Home Ownership Rate, 2000	78.7	70.3
Pct units in multi-unit structures, 2000	5.4	20.0
Median House Value, 2000	\$59,300	\$89,900

Source: mcdc2.missouri.edu

Households were calculated at approximately 4,782 in Montgomery County according to the 2000 census. Families comprised 70.2% of households with about 23.7% of the households being married couples with children under 18. The state rate for married households with children under 18 was less than that of Montgomery County measuring 23.3%. Single parent families account for 7.7% on county households compared to 9.1% in Missouri (OSED). The median household income in 2007 was \$40,298 as compared to the state at \$45,012.

Median Income for Montgomery County	Number	Rank in State	Percent of State
Median household income in 2007	\$40,298	33	89.5%
Median household income in 2000 (adj. for inflation)	\$40,575	33	83.4%
5-year percent change 2000 to 2007	-0.7%	16	

Source: US Census Bureau

The poverty rate in 2007 for Montgomery County was 14.8%, higher than the state at 13.3%. The poverty rate among children 22.2% was higher than that of the state also with 18.4%.

Poverty Estimates for Montgomery County	Number	Rank in State	5-Year % Change	Rank in % Change
Poverty rate in 2007	14.8	75	--	--
In 2000	11.5	79	28.7%	38
Poverty rate for children under 18 in 2007	22.2	66	--	--
In 2000	16.8	69	32.1%	26

Source: US Census Bureau

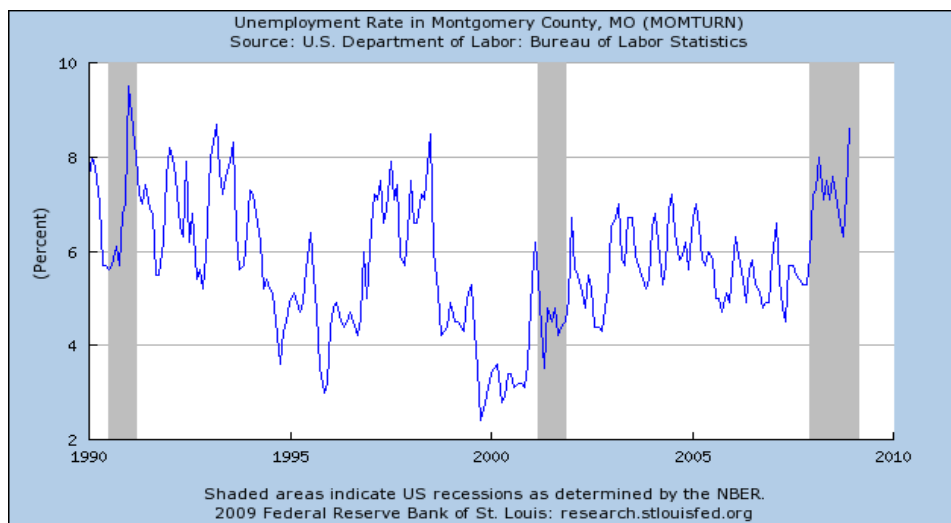
In 2006 Kids Count reports 43.7% of children residing in our county were enrolled in the free and reduced lunch program, compared to the statewide percentage of 40.7.

2007 Indicators of Child Well-being	
Number of Free lunch Eligible	
Missouri	364,959
Montgomery	771

Source: mcdc2.missouri.edu

The 2007 annual Kids Count data shows Montgomery County indicators on children ranked 60 out of 114 counties. Kids Count indicators also show that 8.2% of infants born from 2002-2006 were of low birth weight and births to teenage moms were 56.3 per 1,000 girls, compared to the state rate of 45.6.

Employment data from December 2008 indicate an unemployment rate of 8.6%, compared to the state rate of 7.0 % (BLS). The 2006 data indicates there were 6,333 jobs in Montgomery County. Farm employment accounted for the largest percentage of jobs at 13.4% followed by retail trade, manufacturing and construction, each averaging 10%. Montgomery County being a bedroom community 44.5% of workers commuted outside the county for work in 2000 (OSED).



College graduates comprise 9.9% of county residents age 25 and older compared to the statewide 21.6%. Additionally, 19.8% reported some college education compared to 27% statewide. The 2008 high school graduation rate for Montgomery County was 92%, higher than the statewide rate of 85.2% as reported by the Missouri Department of Elementary and Secondary Education.

In the 2007 Health & Preventive Practices for Montgomery County Adults 22.5% reported their health was “fair to poor” compared to 16.8% statewide. While 14.7% of Missourians reported having no health insurance coverage, the percentage without coverage in Montgomery County was estimated at 18.9%. The 2007 Medicaid participation rate was 16.9% for the county and 15.2% for the state.

In this report the top three prevalence indicators for the county were identified as:

1. Overweight (BMI 25.0-29.9) at 38.2% compared to the state at 37.5%
2. Smoking at 28.3% compared to the state at 23.2%
3. Obesity (BMI>30) at 27.8% as compared to the state at 29.1%.

Environmental




According to 2000 US Census data, there were 4,775 occupied housing units and of those 17.9% were built prior to 1959. Being a rural area, most of those housing units are spread evenly throughout the community with small clusters located in the heavier populated towns of Wellsville, Jonesburg and Montgomery City.

Montgomery County does have a sewer ordinance in effect with no acreage exemption. One concern is that there are 4 unincorporated towns that have no public sewer or water. This means that most of the sewer systems in these communities are not adequate and do not meet ordinance specifications. 47% of the county population live outside of incorporated areas, therefore have their own sewer and water (well or cistern).

There has been no known lead abatement or renovation projects in this county. Area healthcare providers and community agencies continue to screen and test children 5 and under for elevated lead levels. The 2007 Missouri Kids Count reports 1.1% of children have elevated lead levels as compared to the state level of 2.2%.

Montgomery County has no hazardous waste sites, but has one closed landfill. From 2002 to early 2006 there was only one hazardous substance emergency event. Although Montgomery County has been affected minimally by this type of event, the potential is significant. I-70 a major interstate runs through the county from east to west and is heavily traveled by transport trucks carrying hazardous materials; one truck accident could wreak havoc and cause a major environmental catastrophe within Montgomery County.

INFECTIOUS DISEASES

Status	Cases	Reported	Expected
	E.coli	1	2
	Salmonella	12	17
	Shigella	7	7

TOXIC CHEMICALS RELEASED ANNUALLY²: 4,056 pounds

Carbon Monoxide	Nitrogen Dioxide	Sulfur Dioxide	Ozone	Particulate Matter	Lead
Yes	Yes	Yes	Yes	Yes	Yes

NATIONAL AIR QUALITY STANDARDS MET?³



Indicates a status favorable to peers



Indicates a status less than favorable

Source: Community Health Status Indicator

Public Safety/Domestic Violence

Montgomery County has a relatively low crime statistics as compared to statewide numbers. According to the Missouri Uniform Crime Reporting Program (UCR) statistics, in a five year period from 2003-2008 there were two criminal homicides, one manslaughter, four forcible rapes, and one attempted rape. During that same time period there were 151 aggravate assaults for an average of 30 per year. The Crime Index Offense Rates map for the state of Missouri in 2006 depicts Montgomery County is in lowest quartile with a rate less than 0.50 per 100,000 populations. Crime rates fluctuate from year to year, in 2008 Montgomery County

experienced the lowest number of violent crimes (22) for the five year period. The juvenile law violations rates for Montgomery County are lower than the statewide rates as depicted in the Kids Count 2007 chart below.

Juvenile law violation referrals, ages 10-17 (per 1,000) 2002/2005	MO	61.8	59.0
	Montgomery	35.1	46.6

Source: Kids Count 2007

While our county is voicing concern with illegal drug usage among its population, the UCR indicates a substantial decrease in the methamphetamine labs in Montgomery County over the last five years. The UCR indicates there were 10 methamphetamine labs in 2006 as opposed to 49 in 2002 in this county. Although the illegal drug use is a valid concern, alcohol still ranks as the number one problem according to the Division of Alcohol and Drug Abuse; marijuana ranks second and methamphetamine is third. Since drug and alcohol use has a direct correlation to domestic violence, abuse, neglect and other crimes, this is an area of concern that needs close monitoring.

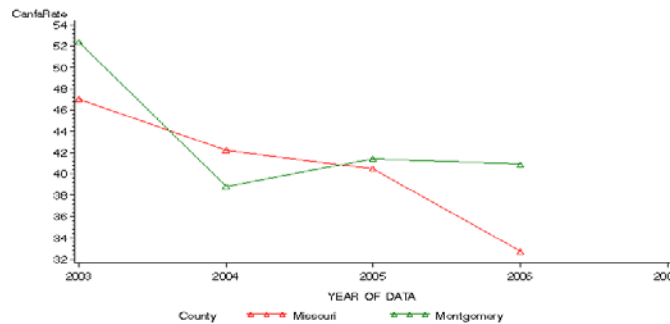
The child abuse and neglect rates for Montgomery County were higher than the statewide rates 4 of 5 years for the 2002-2006 periods. This is an area that warrants concern.

Counties Vs Years by Indicator

Counties	2003	2004	2005	2006	2007
Indicators of Child Well-being					
Child abuse/family assessment per 1,000					
Missouri	47.0	42.2	40.5	32.7	.
Montgomery	52.4	38.8	41.4	40.9	

Source: Kids Count 2007

Child abuse/family assessment per 1,000



Source: Kids Count 2007

Abuse and neglect is not limited to only children in Montgomery County. The 2007 Missouri Senior Report indicates we rank at 20.9 in crime and senior abuse per 1,000 persons as compared to the state at 36.0. We rank in the second to lowest quartile on the Senior Safety Index for both 2006 and 2007.

Unintended Injury

From 2003-2006 there were 6,566 unintentional injuries to Montgomery County residents as indicated in the table below. Fourteen of those unintentional injuries resulted in death for that period. Leading the list of causes is fall/jumps with 1979, followed by MVA with 758 and cut/pierce with 530. The primary age group of this population was 25-44 years of age with 564 more males involved than females. There is no significant change in hospitalization rates identified with unintentional injuries.

In 2005 there were 441 MVA involving cars and pickup trucks according to MICA data, 16% were not wearing seat belts and 7 were alcohol related. The largest age group represented for MVA's in Montgomery County were the 25-44 age group.

Work related injuries from 2002-2006 resulted in 429 Emergency Room visits with Workers Compensation as the payment source. Of those 429 incidents the three leading causes for an ER visit were: open wounds, sprain or strains and superficial injury. Data show no increased incidence in work related injury for Montgomery County.

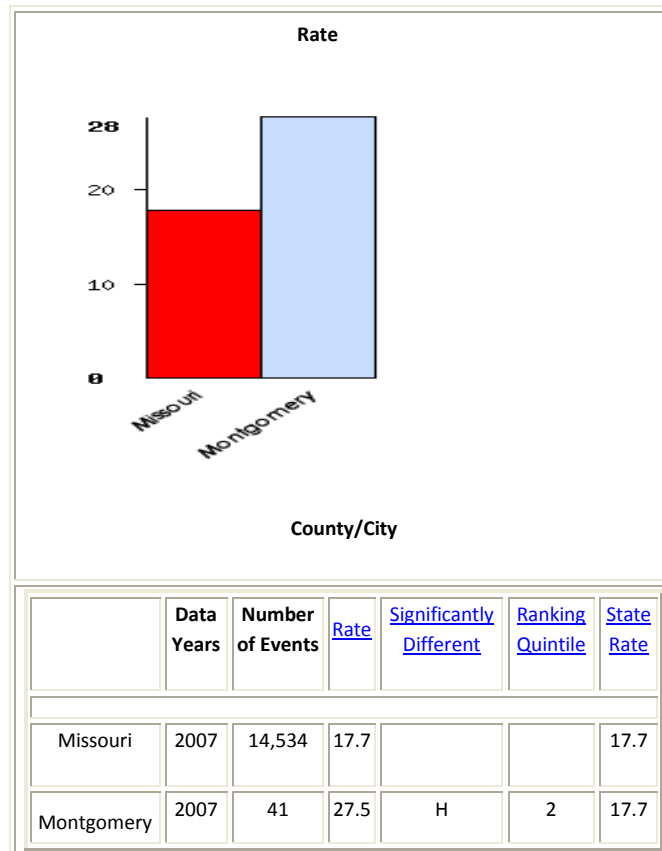
Injuries: to Residents of Montgomery County												
Intent												
	Assault		Legal Int./War		Self-Injury		Unintentional		Unknown Intent		All	
Year	Number	Rate	Number	Rate	Number	Rate	Number	Rate	Number	Rate	Number	Rate
2002	44	414.8	3	@.@	8	@.@	1,301	11,229.5	22	194.1	1,378	11,934.1
2003	25	243.8	1	@.@	21	194.6	1,291	11,160.4	19	@.@	1,357	11,775.5
2004	27	244.7	0	@.@	25	224.1	1,312	11,096.8	8	@.@	1,372	11,633.7
2005	41	386.4	1	@.@	18	@.@	1,339	11,448.8	21	168.7	1,420	12,178.0
2006	47	446.0	2	@.@	11	@.@	1,323	11,502.3	4	@.@	1,387	12,094.2
2002-2006	184	346.1	7	@.@	83	150.5	6,566	11,287.5	74	126.1	6,914	11,923.1
Footnote	<p style="text-align: center;">Rates Per 100,000 @.@ indicates numerator too small for rate calculation Age Adjustment Uses 2000 Standard Population</p>											

Maternal and Child Health Indicators

According to data from 2003-2007, Montgomery County's percentage of births to mothers without a high school diploma was 22.8% as compared to the statewide rate of 18.3%. From 2002-2006, 8.2% of infants were born of low birth weight versus the state rate of 8.1%. In 2007 it was reported that 12.9% of total live births were to women who had received inadequate prenatal care, whereas the state rate was 11.9%. Infant mortality was 8.4 per 1,000 live births and the statewide rate was 7.0 per 1,000 live births. The 2007 Kids Count report indicates births to teens age 15-19 was currently 56.3 as compared to the state at 45.6 per 1,000 births. The trend indicates worsening and the county rank of outcome measures is 71. Additionally Montgomery County has shown improvement in only 5 of the 10 indicators of child well-being.

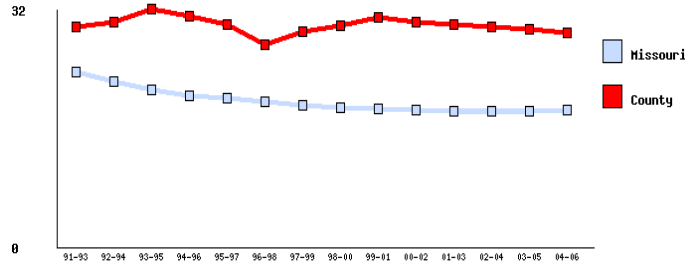
When looking at the risk factors for poor birth outcomes, there is direct correlation with mothers less than 20 years of age, low educational levels and the unmarried. Smoking rates are also higher in these groups, but are elevated in all age groups. The graphs below show the smoking trends of prenatal women in Montgomery County as compared to the state. Montgomery County rates far exceed those of the state. These smoking rates affect the birth outcomes as well as have direct correlation with other health issues such as cardiovascular disease, cancer and secondhand smoke exposure. Montgomery County Health department is currently working on the tobacco issues in our county and have seen slight improvement among its WIC population. Montgomery County identifies smoking among its population as a health concern.

Maternal (Prenatal) Health Profile
 Mother Smoked During Pregnancy
 Missouri and Selected Counties/Cities



County						
--------	--	--	--	--	--	--

**Maternal (Prenatal) Health Profile for Montgomery County Residents
Mother Smoked During Pregnancy
Three-Year Moving Average Rates**



Trend Analysis:
 State rate trend shows a statistically significant decrease.
 Montgomery County rate does not show a statistically significant trend

According to the 2003 Health and Preventative Practices Status report addressing cancer screening indicates 80.9% of women 40-49 have received no mammogram or clinical breast exam in the last year as compared to the state rate of 49.4% and 46.3% for the central region. The prevalence rate is significantly higher for Montgomery County. The Ellis Fischel mobile mammography van visits our health department several times a year to provide this service for several years. Many of our female population do not qualify for their services. In November of 2008 Missouri Baptist Susan G Komen van began providing mammography services also. This agency provides services for the younger women as well as those with no insurance coverage. On their first visit they saw 32 women and diagnosed two cases of breast cancer. They also provided made the appropriate referrals and covered the costs for these two individuals who were uninsured. We believe this is a very valuable service for our county. With this new provider we hope to see positive change in this rate.

WIC child statistics for the 2003-2007 periods indicate 95.1% of our children were adequately immunized as compared to the state rate of 83.9%. As of 12/31/07 CASA data shows only 40% of our children 1-6 are up-to-date on their immunizations. This number is not an accurate indicator due to the fact that providers are not mandated to enter immunizations into this system. Of the WIC children in our county 87% are on Medicaid. We work with their specific insurance networks to monitor and encourage periodic screenings. There were 10 reported deaths in children under 15 for the 2003-2007 periods. Known causes of child mortality are not identified in the MICA provided data.

There were 300 unintentional injuries in children less than 15 years of age in Montgomery County for 2006. This calculates to a rate of 13,251 per 100,000, higher than the state rate of 11,838 per 100,000. The leading

cause of injury for children is jump/fall, the same cause in injury to the general population. In 2006 there were 105 of this specific type injury in children under 15.

According to Missouri Youth Behavioral Surveillance System data by the age of 14.8% of high school students smoked greater than 10 cigarettes daily. Montgomery County health Department is actively working with the two school districts in our county to deliver tobacco prevention education to our youth. Our data indicates 23% of 11th graders polled reported smoking/ chewing regularly.

Prevalence of Infectious Disease

There have been no major outbreaks of infectious disease in Montgomery County over the last several years. MICA data indicates from 2004-2006 there were 42 cases of Chlamydia and 3 cases of Gonorrhea. These numbers are significantly lower than statewide rates. No Syphilis or active cases or Tuberculosis were reported for this period.

The number of deaths resulting from influenza and pneumonia from 2003-2007 equaled 30. The rate for Montgomery County was 31.8 per 100,000 as compared to Missouri at 21.9 per 100,000. There were no reported.

Childhood immunization rates were represented earlier in the maternal and child health indicator section. No data is available to determine the adult immunization rate for Montgomery County.

Prevalence of Chronic Disease Risk Factors

The Behavioral Risk Factor Surveillance System is currently under construction so data could not be retrieved. However, the 2003 Health and Preventive Practices Status Report from the Missouri County-level Study for Montgomery County identifies 19.5% believe their health to be of fair to poor status as compared to the state rate of 16.9%. Behavioral risk factors include: physical inactivity, smoking and obesity. These unhealthy lifestyle choices can greatly contribute to chronic disease and premature death among our population; therefore we need to find and develop opportunities to educate and motivate our population to assure more positive outcomes.

The 2007 county level study 2007 shows 28.3% reported being smokers and 6.0% used smokeless tobacco. The 2003 Health and Preventative Practice Status Report indicate 30.5% are currently smokers versus the state rate of 26.5%. The smoking habit of our youth was addressed in the maternal and child health indicator section of this report.

Physical inactivity was rated at 30.8% in the county as compared to the state at 23.0%. This lifestyle choice affects our population's incidence for heart disease, diabetes and stroke as well as other preventable diseases. The Montgomery County R-II School District has received a three year grant (Improve Community and

Nutrition Grant) through MFH to improve the overall health and well being of our community through promotion of physical activity.

There were 22 preventable hospitalizations in 2006 in the county due to diabetes. The Montgomery County rate was 21.4% compared to the state at 10.7%. From 2002-2006 the number one cause for preventable hospitalization was chronic obstructive pulmonary disease (COPD) with 96, the county rate is 16.4% versus the state at 10.7%. Each of these disease processes are linked to modifiable risk factors.

Obesity is a growing concern in our community. The 2003 Health and Preventative Practice Status Report indicate that 35.9% of our population is obese with a BMI \geq 30 as compared to the state rate of 23.4% and the central region rate of 23.6%. The prevalence rate for Obesity is significantly higher in Montgomery County. The Montgomery County R-II School District is offering yoga, walking trails, and strength training classes to promote physical activity through a three year grant they received from the MFFH. We believe this is an important initial step in addressing the obesity issue. Being a small rural county there is not many resources' available for the organization or promotion of such activities.

The 2007 YRBS indicates 43.5% of the students surveyed reported they were physically active at least 60 minutes per day on 5 days or more and only 18.1% ate five or more servings of fruit and vegetables daily prior to the survey. 2007 WIC data shows 18.5% of the children receiving services in Montgomery County were at risk for becoming overweight falling between the 85th and 85th percentile. 17.3% are greater than or equal to the 95th percentile. This data shows the potential for our youth to become overweight and/or obese adults. With behavior changes at an early age we can prevent many of our chronic diseases.

Leading Causes of Mortality

The leading cause of death in Montgomery County is heart disease followed by cancer and then stroke. The age group for heart, cancer and stroke disease related deaths was 65 and over comparable to the state. When comparing mortality causes and age groups to that of other counties of comparable size and demographics the statistics were virtually the same. The age adjusted rates for heart disease and stroke show no significant difference in the state rate, while the age adjusted rate for cancer was 233.1 for the county and 204.4 for the state. This finding is significantly higher than state values. The significantly higher rate for cancer may be attributable to risk factors and lifestyle choices among the Montgomery County population.

Community Health Improvement Capacity Indicators

Montgomery County has experienced a shortage in healthcare providers for a number of years. We currently have only one full time physician and 4 part-time for a population of 11,920. We have one dentist who does not accept Medicaid, one optometrist and one provider for mental health counseling. We do not have a hospital or any emergency services. We have three long term care facilities in our county. No resources are available for the sight or hearing impaired. Many of our residents are forced to leave the county for all types of healthcare.

In addition to an inadequate number of healthcare providers transportation outside the county to receive these services also poses a hardship for many in the community. Daily people who are uninsured call or stop

by the Health Department to seek assistance for medical needs. The population of our county that lack insurance are many, the unemployed, those living in poverty, the self employed, the elderly and even those working with premiums that are unaffordable or benefits are not offered. This is an area of need we are trying to address, but with the state of the economy it is difficult to get anyone interested in the startup of a new clinic with expanded services and providers. We are not designated as a healthcare provider shortage area and that limits the possibility of funding for a FQHC.

Community Health Resource Indicators

After reviewing the leading causes of mortality and identifying risk factors associated with these disease processes it is essential that smoking, obesity and physical activity is addressed in the Montgomery County population. Currently there are limited resources that are available to assist our citizens in confronting these challenges.

Montgomery County Health Department has limited free/reduced services to offer the community who are unable to afford to pay for medical services. We hold blood pressure screenings weekly at our office and quarterly throughout the county. Blood sugars and cholesterol screenings are performed at a reduced rate. We hold a women's health clinic monthly with fees on a sliding scale. The WIC program is available for qualifying participants and through the MCH contract and WIC program we are working with the smoking population, as well as youth, in tobacco prevention education efforts. Immunization clinics are held monthly for a reduced/free rate if they aren't covered by MC+.

The Montgomery County R-II School District is offering yoga, walking trails, and strength training classes to promote physical activity.

The Wellsville-Middletown R-I School District is offering curriculum in junior high health class to promote healthy positive behaviors among youth.

The Montgomery – Wellsville Area United Way provides funding for the health department to use in assisting those without insurance with payment for medical services and prescriptions. Two area clinics provide services on a sliding scale fee for healthcare.

Community Health Assessment Survey

A community survey was developed by a MU nursing graduate student for distribution to our county population. This survey was distributed in February of 2009 to various people throughout the county. We surveyed those visiting the health department for services, as well as blood pressure screening participants, home health clients, community civic organizations, groups, CPR classes, childcare providers and Sunday school classes. We had 250 surveys available for distribution throughout the county, with 181 completed surveys returned. The surveys were tallied and the overall findings are attached. In the survey Montgomery County residents identified the following three as their greatest areas of concern:

1. Drug Use/Abuse
2. Alcohol Use/Abuse
3. Child Abuse/Neglect
High School Dropout
Lack of Youth Activities

Data Sources

Centers for Disease Control and Prevention (CDC). *Behavioral Risk Factor Surveillance System Survey Data*. Atlanta, Georgia: U.S. Department of Health and Human Services, Centers for Disease Control and Prevention, 2007

www.cdc.gov

Missouri Department of Secondary Education (DESE)

www.dese.mo.gov

Missouri Department of Health and Senior Services, Bureau of Immunizations, *CASA Report*

Missouri Department of Health and Senior Services, *Community Data Profiles*

www.dhss.mo.gov

Missouri Department of Health and Senior Services, *MICA*

www.dhss.mo.gov

Missouri Department of Health and Senior Services, *2007 Missouri Senior Report*

www.missouriseniorreport.org/resources_pdf.shtml Retrieved 02/12/09

Missouri Department of Mental Health, Division of Alcohol and Drug Abuse

www.dmh.mo.gov/ada/rpts/e191-192.pdf Retrieved 02/12/09

Missouri Kids Count 2007

www.oseda.missouri.edu/kidscount Retrieved 02/12/09

University of Missouri Extension, Office of Social and Economic Data Analysis (OSED)

www.mcdc2.missouri.edu Retrieved 02/10/09

USDC, Bureau of the Census 2000 -2008 Census Data

www.census.gov

USDC, Bureau of Labor Statistics, Employment Data

www.bls.gov

U.S. Department of Health and Human Service, *Community Health Status Indicators*

www.communityhealth.hhs.gov Retrieved 02/24/09

Montgomery County 2009 Community Survey

Demographics

1. Sex 38 M 143 F

2. Select Your Age Group

12 Under 20 28 20-29 24 30-39 28 40-49

30 50-59 27 60-69 22 70-79 10 80 and Above

3. How long have you lived in Montgomery County? _____

<1 Yr	2-5 Yr	6-10 Yr	11-20 Yr	21-30 Yr	31-40 Yr	41-50 Yr	51-60 Yr	61-70 Yr	71-80 Yr	81-90 Yr	Life
5	21	14	33	25	22	15	9	14	5	3	15

Healthcare Access

4. What type(s) of health insurance coverage does your household have?

58 Medicare 30 Medicaid 33 Dental 23 Vision

15 Self-Insured 83 Insured through an Employer 13 None

5. Which best describes who has healthcare insurance coverage in your household?

111 Everyone 13 No one 19 Children Only

26 Adult Female Only 15 Adult Male Only

6. How many times in the past year have you traveled outside Montgomery County to visit a physician, because you were unable to obtain an appointment in Montgomery County?

86 Zero (0) 47 1-5 19 6-10 20 Greater than 10

7. Do you see a dentist for checkups? 63 No 114 Yes (how many times a year 1-5 If no, for what reason?

12 No dentist 36 Cost No teeth, No provider, No insurance, No problems Other & explain

Health Concerns

8. Are the following issues of concern in our community?

	1 Strongly Disagree	2 Disagree	3 Neither Agree or Disagree	4 Agree	5 Strongly Agree	4+5
Child Abuse/Neglect	5	5	37	70	44	114
Alcohol Use/Abuse	4	4	30	76	46	122
Drug Use/Abuse	6	4	18	71	64	135
Unintended Pregnancy	3	6	44	75	28	103
Sexually Transmitted Diseases	2	7	60	62	23	85
Tobacco Use	3	7	45	64	39	103
Motor Vehicle Accidents	2	8	48	69	29	98
Seatbelt Use	7	6	47	67	28	95
Suicide	2	9	71	58	16	74
High School Dropout	4	6	36	86	28	114
Obesity	3	3	43	79	27	106
Anorexia/Bulimia	3	5	89	47	3	50
Availability of Affordable Healthy Food Options	2	11	59	60	24	84
Stroke	4	5	79	51	15	66
High Blood Pressure	3	4	64	62	20	82
Smoking During Pregnancy	3	6	46	67	32	99
Alcohol Use During Pregnancy	4	7	54	62	28	90
Lack of extracurricular activities for the youth	5	7	32	59	55	114

9. Review the list from the previous page. Please rank the top three (3) topics that concern you most.

(1) Drug Use/Abuse

(2) Child abuse/Neglect

(3) Alcohol Use/Abuse



Public Health
Prevent. Promote. Protect.

